

GUEST

**MODEL 729828-P
DUAL STATION KIT
FOR 296-5, 502 AND 502A SPOTLIGHTS**

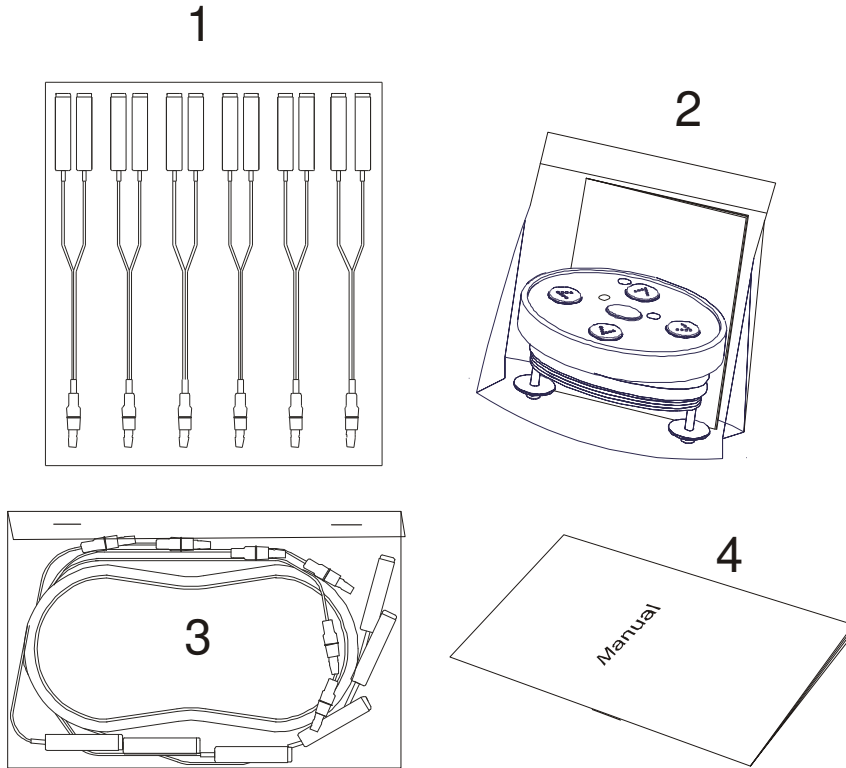
**INSTALLATION AND OPERATION
INSTRUCTIONS**

**IMPORTANT !
READ THESE INSTRUCTIONS BEFORE
INSTALLING THIS PRODUCT.**

KEEP THESE INSTRUCTIONS FOR FUTURE REFERENCE.

Your Dual Station Kit includes the following:

- 1- Splitter wire sets (total of 6 colored wire sets, you will only need 5 sets for this assembly).
- 2- One control panel with Gasket, Hardware, and Instructions Manual
- 3- One Interconnect Cable, 15 ft long.



Mounting the Control Panel

Mount the Control panel according to its instruction manual.

Electrical connections

The Guest Model 502A spotlight has two types of wiring connections. They are:

- *Control Cable wires* - the small wires within the gray casing that carry your commands from the control panel to the spotlight.
- *Power supply wires*- are Black (-) and Red (+) wires without connectors that bring 12-volt DC power into the spotlight and into the control panel.

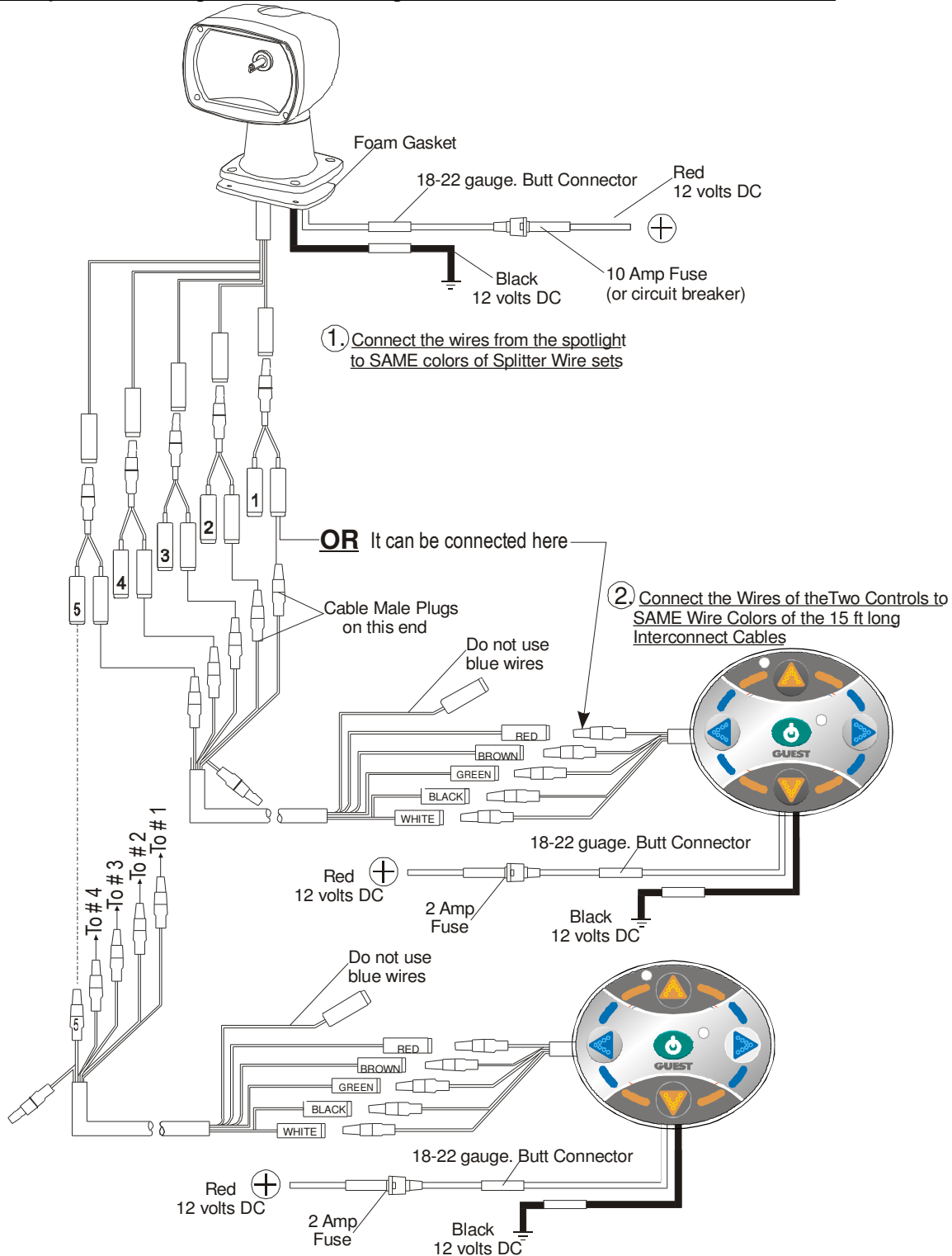
CAUTION!
**DO NOT CONNECT THE CONTROL WIRES (with connectors)
TO ANY POWER SUPPLY WIRES.**
DO NOT REVERSE THE RED (POSITIVE) AND BLACK (NEGATIVE) POWER WIRES.

This spotlight requires a power source of 12-volt DC power that is capable of supplying 10 amps of current even when other equipment is operating. For best results, run two new power supply wires from the red (+) and black (-) power wires of the light directly to the main 12-volt DC accessory panel. Install fuses and fuse holders as shown in diagram. A 10-amp circuit breaker can be installed instead of an in-line 10-amp fuse.

If the light will be mounted less than 30 feet, (9m) from its power source, use 12-gauge (3mm) power supply wires. If the distance will be more than 30 feet, (9m) use 10 gauge (5mm) wires.

An In-line 2amp fuse and holder should be installed on the red 22 awg power wire for each control.

Complete the wiring connections using the items included in kit as shown below:



Precautions

DO NOT look directly into the spotlight or floodlight while it is operating.

DO NOT cover the light with a fabric cover or any other flammable material. Accidental activation may result in a fire hazard.

DO turn the spotlight toward the control station when not in use. If the spotlight is accidentally activated during daylight, the operator will be more likely to notice and turn the spotlight off before draining a battery.

LIMITED WARRANTY

For one (1) year from the date of original purchase, The Guest Co. will, at its discretion, repair or replace for the original consumer, free of charge, any parts found defective in material or workmanship. All transportation charges under this warranty must be borne by the consumer.

Proof of purchase is required: A computerized register receipt is required. Hand-written receipts are not accepted for warranty proof of purchase. In the absence of a receipt, warranty period will be calculated from date of manufacture printed or stamped on the product.

There is no other expressed warranty. Implied warranties, including those of merchantability and fitness for a particular purpose, are limited to one year from the date of purchase. This is the exclusive remedy and consequential damages are excluded where permitted by law.

Tel: (707) 226-9600
Fax: (707) 226-9670

Email: info@marinco.com
Website: www.marinco.com